

الصف  
الخامس  
الابتدائي  
٢٠٢٥

مراجعة + بنك اسئلة

# التميز

أ/ محمود سعيد

Elmotamyez Questions Bank

# ICT

October Revision

اعداد  
أ/ محمود سعيد

نسخة  
مجانية

ملحق الإجابات  
بالداخل



El.Motamyez.School

يمكنكم الحصول على المذكرات والاختبارات من خلال مسح رمز ال QR Code أو من خلال صفحة "التميز - أ/ محمود سعيد".  
يرجى مراعاة حقوق صاحب المحتوى عند النشر.



## Lesson 02

## Computer Accessories



## Computer hardware components

**Flash Memory:** Transfers files and data between computers.



**External Hard Drive:** Like HDD (Hard Disk Drive), but much faster.



**Ethernet Cable:** Cable connects a computer or laptop to a router.

**Ethernet Port:** Connect an ethernet cable



Ethernet is more stable and faster than Wi-Fi

**Router:** device that connects a computer to the internet via ethernet or wi-fi

**HDMI:** (High- definition multimedia interface)

Cable transfers audio and video from and to devices.



## Units of measurements

- **Bit:** the smallest unit of data.

**Byte (B)** = 8 bits = 1 character cat need 3 B

**Kilobyte (KB):** 1 KB = 1024 B

**Megabyte (MB):** 1 MB = 1024 KB

**Gigabyte (GB):** 1 GB = 1024 MB

**Terabyte (TB):** 1024 GB

**Megabits per second (Mbps):**

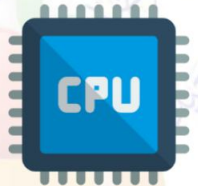
- Measures the **speed** of a network or internet connection

- Faster speed = better connection

**Gigahertz (GHZ):**

measures the number of **cycles** your CPU carries out per second

**NOTE:** The higher the number of cycles, the faster the speed.



## Potential computer problems and solutions :

Problem	Cause & Solution
١ - Trouble processing large files (Like big PowerPoint presentation)	<b>Cause:</b> not enough graphic storage. <b>Solution:</b> shutdown some programs.
٢ - Not able to store files	<b>Cause:</b> Not enough space. <b>Solution:</b> Move old files to external drive
٣ - A poor video-conference connection.	<b>Cause:</b> slow wireless internet connection. <b>Solution:</b> try an ethernet connection.
٤ - The home internet connection not working	<b>Cause:</b> connection interrupted. <b>Solution:</b> use ethernet or contact Internet service provider (ISP)





## Lesson 03

## Networks



**Networks are groups of people, or things that are connected to each other for a common purpose.**

## Types of computer Networks

➤ **Local Area Network (LAN):**

Consist of a computer connected to another computer or device, such as a printer or router.



➤ **Internet:**

Connects millions of computers from all around the world.

**To connect a computer to the internet, we need:**

- 1- Gateway (Router) that connects your computer to an ISP
- 2- The ISP: a company that provides internet service to customers



**World Wide Web (WWW) is part of the internet network and is made up of web pages and sites that people can navigate**

**Example: Egyptian Knowledge Bank (EKB) provide **reliable** information for **free** to all Egyptians who register on the site**

➤ **Intranet:**

It is **private**, and **restricted** to only those who are part of the business, school, or organization

## Types of computer Networks

**Open Network**

It is opened and accessible to all

Example: The Web

**Closed Network**

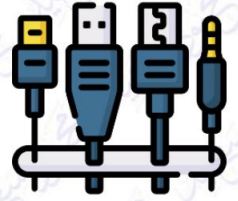
It may only have computers linked by cable to allow file sharing

Example: A school's computer lab





## Cable



A long connector that transmits data or power between devices

Example: ethernet cable



## History of Communication technology

### ➤ 80s:

- They used **phone line** to connect to the internet
- Connection is **slow** but **stable**
- They couldn't use the phone when using the internet

### ➤ Late 80:

#### Digital subscriber line (DSL)

- Allow phone and the internet to be used **simultaneously** (same time).
- **High-speed** connection

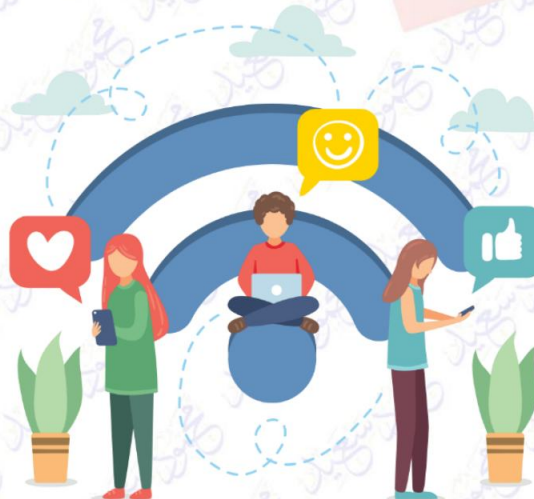
### ➤ 90s:

#### World Wide Web (WWW)

- Consists of large **set of web pages** that are **linked** using hyperlinks.

### ➤ 2000+:

- **Wi-Fi**
- **Hotspots** (allow internet access anywhere from your smartphone).







## Lesson 04

## Digital Communication tools

## Ways that people can use networks to communicate

**For people**

We communicate using computer networks every day, every time we use our phone to (send a text – buy something – take an online class – use an app or program)

**For businesses & organizations**

- **Closed networks:** to share **private** information.
- **Open networks:** to share **public** information.

## Internet of Things (IOT)

- Household items can be part of a network this is called Internet of things (IOT)
- IOT consists of devices linked to the internet via Wi-Fi.
- These devices can be controlled from the same room or in another city.



**Ex:** Bluetooth speakers - digital refrigerator - washing machine

**Bluetooth:** a networking technology connects wireless mobile devices over a **short range** to form a network to transmit data between different devices.



### Technology help people of determination

- 1- Screen Readers helps visually impaired people to **write research** papers, **do homework** and **access files** and documents
- 2- Braille Method: helps blind people **read**.
- 3- E-commerce: Online shopping, where people can buy and sell **products**.

- you should ask your parents before go online shopping.
- Don't share your personal information (digital privacy)





## Lesson 05

## Internet connection problems and solutions



Fred hiebert uses :

- **Word:** to write reports
- **Excel:** to create tables and graphs
- **PowerPoint:** to make presentations
- **Email and video conferencing** to share his discoveries with colleagues.



While using these programs you may face problems about the device hardware or software or problems about internet connection.

**Follow this troubleshooting process to help with computer problems:**

- 1- Identify the problem.
- 2- Plan different ways you might solve the problem.
- 3- Go through your potential solutions to the problem.
- 4- If you do not find a solution you should ask your teacher or a member of your family for help.

## Problem

## Possible solutions

١ - Computer slows down when opening an app

- Shut down and restart it.
- Check for software updates.
- Delete unwanted apps.



٢ - Browser running slow

- Check Wi-Fi signal.
- Make sure to update the apps.

٣ - No internet connection

- Use the software to troubleshoot your Wi-Fi connection.
- Check that the router is connected
- Restart your router
- Try a new ethernet cable
- Contact the customer service of your ISP



٤ - Slow to download

- Restart computer and router.
- Check internet speed.





## Lesson 06

## Digital file management



There are many ways to find information, such as

school  
libraries



TV  
programs



internet



QR codes



QR code helps us to access the information easily and quickly by **scanning** the code with **a camera phone**.

### How we save and store information?

#### Scanner

Save images and documents on a computer for late use.



#### Flash Memory

Store and share information and data



#### Digital camera

Take photos and videos and store them



### How to get organized using ICT tools?

#### ١. Create the main folder:

- Press the right click >>> New >>> Folder
- Then type a name for the folder



#### ٢. Add sub-folders

- Open the main folder >>> Press right click >>> New >>> Folder.
- Type a name for the folder.

#### ٣. Give each file name

- You should give a title to a folder  
right click >>> Rename





# Lesson 08

# Sharing Information



We can share information online, using:

### The Internet



- The internet is used to **share** information **over the web**.
- It is less secure.



### The Intranet



- An intranet is used to **share** information in **a closed network**.
- It is more secure.



## MS Excel

### To sort information alphabetically

Go to **toolbar** >>> Click on **Data** >>> then Click **sort**



### To Set formulas in cells:

To add (+), subtract (-), multiply (x) or divide (/):

Type (=) in the cell, this tells Excel you are creating a formula.

→ In Excel, a cell is named using a combination of:

**letter**  
at the **top** of **column**

**number**  
on the **left** side of **row**

	A	B	C	D	E	F
1	Trainers	Pokeball	Great Ball	Ultra ball		
2	Iva	2	3	1	=B2+C2+D2	
3	Liam	5	5	2		
4	Adora	10	2	3		
5						
6						
7						
8						
9						
10						







## October Questions Bank



### Question 01

### Read and Choose the Correct answer

- 1 ..... is a device that connects a computer to the internet via Wi-Fi.
  - a HDMI
  - b A router
  - c HDD
- 2 One of the measurement units is the Megabyte (Mb), which is equal to .....
  - a ١٠٢٤ bytes
  - b ١٠٢٤ gigabyte
  - c ١٠٢٤ kilobytes
- 3 To write the word "ICT" we need ..... to represent it in a computer system.
  - a ٣ bits
  - b ٨ bits
  - c ٣ bytes
- 4 ..... is the same of HDD, but it runs faster.
  - a External hard drive
  - b HDMI
  - c Router
- 5 Network connection or internet speed is measured by.....
  - a GHZ
  - b Mbps
  - c MB
- 6 The smallest unit of data is .....
  - a bit
  - b byte
  - c Gigabyte
- 7 ..... measures the number of cycles your CPU carries out per second.
  - a Gigahertz
  - b Mbps
  - c GB
- 8 Which problem would you use Ethernet cable to solve it?
  - a Not able to store files
  - b A poor video conference connection
  - c Trouble processing large files
- 9 ..... is a cable that transfer audio and video to and from devices
  - a Ethernet cable
  - b Wi-Fi
  - c HDMI
- 10 Byte is equal to ..... bits.
  - a ١٠٢٤
  - b ٨
  - c ٥
- 11 To solve the problem of space, you must .....old files to an external drive.
  - a move
  - b delete
  - c shut down





- 12 The ..... is more stable and faster than Wi-Fi  
 (a) Flash memory (b) Ethernet (c) External Hard Drive
- 13 ..... is a cable that connects the computer devices to the router.  
 (a) Ethernet (b) USB (c) Flash memory
- 14 ..... are groups of people, or things are connected to each other  
 (a) Computers (b) Networks (c) Gateways
- 15 ..... is a network that connects computers and people using them from all around the world.  
 (a) Intranet (b) Internet (c) Device
- 16 The web is an example of .....  
 (a) open network (b) closed network (c) LAN
- 17 The ..... is made up of web pages that people can navigate.  
 (a) router (b) intranet (c) W/W
- 18 The router is considered as ..... for the internet.  
 (a) antivirus (b) gateway (c) famous browser
- 19 A ..... is a long connector that transmits data or power between devices.  
 (a) flash memory (b) cable (c) router
- 20 ..... allows the phone and the internet to be used simultaneously.  
 (a) DSL (b) Dial-up (c) W/W
- 21 A school's computer lab is an example for .....  
 (a) internet (b) open network (c) closed network
- 22 To connect your computer to the internet you need a .....  
 (a) Network (b) Gateway (c) Flash memory
- 23 The World Wide Web is ..... the internet.  
 (a) all (b) not related (c) part of
- 24 ..... connect computers together; to share important information.  
 (a) Computer accessories (b) Computer networks (c) Computer hardware
- 25 ..... is available for free to all Egyptians who register on the site.  
 (a) Banks' informations (b) W/W (c) EKB





- 26 ..... networks share public information.  
 (a) Open (b) Closed (c) School
- 27 The ..... consists of a computer connected to a printer or a router  
 (a) internet (b) Ethernet (c) LAN
- 28 The connection of the washing machine to an application on the mobile via Wi-Fi is called.....  
 (a) internet development (b) Internet of things (c) Bluetooth
- 29 You can use ..... applications to buy anything on the internet.  
 (a) browser (b) braille (c) E-commerce
- 30 ..... is restricted to only those who are part of the business, school, or organization with which they are connected.  
 (a) Intranet (b) IoT (c) Open network
- 31 The ..... is used for the visually impaired to get audio feedback.  
 (a) Screen reader (b) scanner (c) Bluetooth
- 32 The ..... consists of devices linked to the internet via Wi-Fi.  
 (a) CPU (b) IOT (c) DSL
- 33 ..... is a networking technology that connects wireless mobile devices over a short range.  
 (a) Bluetooth (b) Ethernet Cable (c) Router
- 34 ..... is a company that provides internet service to customers.  
 (a) ISP (b) DSL (c) IoT
- 35 Household items can be part of a network as well, this is called .....  
 (a) Internet of Things (b) Gateway (c) address
- 36 ..... are an example of the internet of things.  
 (a) Bluetooth speakers (b) Screen reader (c) Mobile devices
- 37 Bluetooth is a networking technology that connects wireless mobile devices over a ..... range to form a network to transmit data.  
 (a) short (b) long (c) middle
- 38 Banks use the..... to share their information.  
 (a) opened networks (b) social media sites (c) closed networks





- 39 Braille method allows blind people to .....
- (a) hear (b) read (c) speak
- 40 The IOT consists of devices linked to the internet via .....
- (a) Bluetooth (b) Wi-Fi (c) satellite
- 41 The first step in solving a problem is .....
- (a) Identify the problem (b) Study solutions (c) Think of ways to solve
- 42 The problem solution of slowing download is .....
- (a) Check internet speed (b) delete unwanted App (c) update the App
- 43 When there isn't an internet connection, we should.....
- (a) check software update (b) check router connection (c) check internet speed
- 44 Mr. Hiebert uses.....to share his discoveries with colleagues.
- (a) email (b) video conference (c) both (a) and (b)
- 45 When the browser running slow, you can.....
- (a) check Wi-Fi signal (b) restart computer (c) shut down the computer
- 46 Mr. Hiebert uses.....to make presentations about his discoveries.
- (a) PowerPoint (b) Facebook (c) WhatsApp
- 47 You can organize files in computer by creating .....
- (a) main folders (b) Sub-folders (c) Both a & b
- 48 ..... helps us to access information by scanning it with a phone camera.
- (a) QR code (b) Printer (c) scanner
- 49 ..... folders help us to manage files using ICT tools.
- (a) Deleting (b) Creating (c) Copying
- 50 To create a new folder, select " ....." from the shortcut menu.
- (a) Paste (b) Copy (c) New
- 51 ..... is used to enter images and files from paper into the computer.
- (a) Keyboard (b) Printer (c) Scanner
- 52 To change the title of a folder, you can use the ..... command.
- (a) New (b) Open (c) Rename





- 53 To organize our files', we should ..... each folder.  
 (a) name (b) remove (c) print
- 54 The ..... are used to store data and information.  
 (a) microphone and mouse (b) flash memory (c) printer
- 55 ..... is used to take and store photos and videos digitally.  
 (a) digital camera (b) QR code (c) printer
- 56 ..... is a program to create graphs.  
 (a) Word (b) Excel (c) PowerPoint
- 57 The ..... Program is used to perform simple formulas.  
 (a) Excel (b) PowerPoint (c) Paint
- 58 You can share information online through .....  
 (a) internet (b) intranet (c) both (a) and (b)
- 59 Network used to share information and less secure is .....  
 (a) internet (b) intranet (c) both (a) and (b)
- 60 To create a simple formula in a cell, first type ..... that tells Excel you are creating a formula  
 (a) = (b) + (c) -

## Question 02

## put " true " or " false "

- 1 An Ethernet cable transmits audio and video to and from devices. ( )
- 2 A bit is the smallest storage unit to store data. ( )
- 3 The more cycles that CPU performs per second, the faster data can be processed. ( )
- 4 Ethernet is more stable and faster than Wi-Fi. ( )
- 5 External hard drive like an HDD but much faster ( )
- 6 Kilobyte (KB) = 1024 byte. ( )
- 7 HDMI is a wire that connects a computer or laptop with the router. ( )
- 8 Megabits per second (Mbps) used to measure network speed. ( )
- 9 Ethernet cable connects computers to the router. ( )
- 10 Giga Byte = 1204 Kilobytes. ( )





- 11 Byte is the smallest unit of data ( )
- 12 To solve the problem of poor network connectivity during a video conference, you can use the wired ethernet network. ( )
- 13 To connect a computer to the internet, you need a router . ( )
- 14 There are no solutions for computer issues. ( )
- 15 Flash memory is an external storage device ( )
- 16 Hard disk space is smaller than flash memory ( )
- 17 In late 80s phone lines are used to connect to internet but couldn't use the phone when on the internet. ( )
- 18 The Internet is more secure and private than the intranet. ( )
- 19 The Internet is a private network that is restricted to some people. ( )
- 20 Hotspot allows you to access the internet anywhere from your smartphone. ( )
- 21 To connect a computer to the internet, a gateway must be used. ( )
- 22 The Egyptian Knowledge Bank is available for free to Egyptians. ( )
- 23 The intranet is not different than the internet. ( )
- 24 WWW is stands for World Wide Web. ( )
- 25 The internet is a type of network that connects computers from all around the world. ( )
- 26 A LAN is a wide area network. ( )
- 27 The internet is used to share information. ( )
- 28 A school's computer lab could have its own closed network ( )
- 29 The company that provides internet to the society is called ISP ( )
- 30 Digital washing machine is an example to the internet of things (IoT) ( )
- 31 Always ask permission from your parents before buying anything online. ( )
- 32 Bluetooth speaker is an example of the Internet of things. ( )
- 33 Bluetooth is a network technology that works over long ranges. ( )
- 34 Braille makes it more difficult to read for people of determination. ( )
- 35 The screen reader is used by visually impaired to get audio feedback ( )
- 36 Braille method allows blind people to read ( )
- 37 We can control internet of things devices in the same room or in another city ( )
- 38 PowerPoint is a Microsoft program used for making presentations. ( )





- 39 Closing some programs is a possible solution in the case of home internet that does not work. ( )
- 40 Restarting the router is one of the ways to solve the slow download problem. ( )
- 41 Identifying the problem is the last step in solving computer problems ( )
- 42 It's important to check for software updates to avoid problems ( )
- 43 One of possible reasons for slow downloads is the internet speed. ( )
- 44 When the browser is running slow, you have to check Wi-Fi signal ( )
- 45 Adding sub folder inside the main is not allowed by operating system. ( )
- 46 You can add main folder inside sub folders to manage files. ( )
- 47 QR code is used to get information quickly and easily. ( )
- 48 Data must be organized in the computer for easy retrieval. ( )
- 49 We can give a name to a folder by right click then rename. ( )
- 50 The main folder contains subfolders and files. ( )
- 51 We use scanner to save image on computer to be used later. ( )
- 52 A scanner is used to enter pictures and files to the computer ( )
- 53 A keyboard can be used to insert images and save it for later use ( )
- 54 To change the title of a folder, choose the "Delete" command. ( )
- 55 To store and share information we use flash memory. ( )
- 56 We must place documents, images, and videos in the correct folder. ( )
- 57 The "+" symbol is the division sign ( )
- 58 The rows in MS Excel are labeled with letters ( )
- 59 You can add or subtract any data using Microsoft Excel ( )
- 60 We cannot sort information in an alphabetical order in Excel ( )

	Choose the correct answer	True or false
Lesson 2	١ - ١٣	١ - ١٦
Lesson 3	١٤ - ٢٧	١٧ - ٢٩
Lesson 4	٢٨ - ٤٠	٣٠ - ٣٧
Lesson 5	٤١ - ٤٦	٣٨ - ٤٤
Lesson 6	٤٧ - ٥٥	٤٥ - ٥٦
Lesson 8	٥٦ - ٦٠	٥٧ - ٦٠

انتهت الأسئلة مع أطيب الامنيات بالنجاح والتوفيق





الصف  
الخامس  
الابتدائي  
٢٠٢٥

مراجعة + بنك اسئلة

# التميز

أ/ محمود سعيد

Model Answers

# ICT

October Revision

اعداد

أ/ محمود سعيد



El.Motamyez.School

يمكنكم الحصول على المذكرات والاختبارات من خلال مسح رمز ال QR Code  
أو من خلال صفحة "التميز - أ/ محمود سعيد".  
يرجى مراعاة حقوق صاحب المحتوى عند النشر.





## October Questions Bank



### Question 01

### Read and Choose the Correct answer

- 1 ..... is a device that connects a computer to the internet via Wi-Fi.
  - a HDMI
  - b A router
  - c HDD
- 2 One of the measurement units is the Megabyte (Mb), which is equal to .....
  - a ١٠٢٤ bytes
  - b ١٠٢٤ gigabyte
  - c ١٠٢٤ kilobytes
- 3 To write the word "ICT" we need ..... to represent it in a computer system.
  - a ٣ bits
  - b ٨ bits
  - c ٣ bytes
- 4 ..... is the same of HDD, but it runs faster.
  - a External hard drive
  - b HDMI
  - c Router
- 5 Network connection or internet speed is measured by.....
  - a GHZ
  - b Mbps
  - c MB
- 6 The smallest unit of data is .....
  - a bit
  - b byte
  - c Gigabyte
- 7 ..... measures the number of cycles your CPU carries out per second.
  - a Gigahertz
  - b Mbps
  - c GB
- 8 Which problem would you use Ethernet cable to solve it?
  - a Not able to store files
  - b A poor video conference connection
  - c Trouble processing large files
- 9 ..... is a cable that transfer audio and video to and from devices
  - a Ethernet cable
  - b Wi-Fi
  - c HDMI
- 10 Byte is equal to ..... bits.
  - a ١٠٢٤
  - b ٨
  - c ٥
- 11 To solve the problem of space, you must .....old files to an external drive.
  - a move
  - b delete
  - c shut down





- 12 The ..... is more stable and faster than Wi-Fi  
 (a) Flash memory (b) **Ethernet** (c) External Hard Drive
- 13 ..... is a cable that connects the computer devices to the router.  
 (a) **Ethernet** (b) USB (c) Flash memory
- 14 ..... are groups of people, or things are connected to each other  
 (a) Computers (b) **Networks** (c) Gateways
- 15 ..... is a network that connects computers and people using them from all around the world.  
 (a) Intranet (b) **Internet** (c) Device
- 16 The web is an example of .....  
 (a) **open network** (b) closed network (c) LAN
- 17 The ..... is made up of web pages that people can navigate.  
 (a) router (b) intranet (c) **WWW**
- 18 The router is considered as ..... for the internet.  
 (a) antivirus (b) **gateway** (c) famous browser
- 19 A ..... is a long connector that transmits data or power between devices.  
 (a) flash memory (b) **cable** (c) router
- 20 ..... allows the phone and the internet to be used simultaneously.  
 (a) **DSL** (b) Dial-up (c) WWW
- 21 A school's computer lab is an example for .....  
 (a) internet (b) open network (c) **closed network**
- 22 To connect your computer to the internet you need a .....  
 (a) Network (b) **Gateway** (c) Flash memory
- 23 The World Wide Web is ..... the internet.  
 (a) all (b) not related (c) **part of**
- 24 ..... connect computers together; to share important information.  
 (a) Computer accessories (b) **Computer networks** (c) Computer hardware
- 25 ..... is available for free to all Egyptians who register on the site.  
 (a) Banks' informations (b) WWW (c) **EKB**





- 26 ..... networks share public information.  
 (a) Open (b) Closed (c) School
- 27 The ..... consists of a computer connected to a printer or a router  
 (a) internet (b) Ethernet (c) LAN
- 28 The connection of the washing machine to an application on the mobile via Wi-Fi is called.....  
 (a) internet development (b) Internet of things (c) Bluetooth
- 29 You can use ..... applications to buy anything on the internet.  
 (a) browser (b) braille (c) E-commerce
- 30 ..... is restricted to only those who are part of the business, school, or organization with which they are connected.  
 (a) Intranet (b) IoT (c) Open network
- 31 The ..... is used for the visually impaired to get audio feedback.  
 (a) Screen reader (b) scanner (c) Bluetooth
- 32 The ..... consists of devices linked to the internet via Wi-Fi.  
 (a) CPU (b) IOT (c) DSL
- 33 ..... is a networking technology that connects wireless mobile devices over a short range.  
 (a) Bluetooth (b) Ethernet Cable (c) Router
- 34 ..... is a company that provides internet service to customers.  
 (a) ISP (b) DSL (c) IoT
- 35 Household items can be part of a network as well, this is called .....  
 (a) Internet of Things (b) Gateway (c) address
- 36 ..... are an example of the internet of things.  
 (a) Bluetooth speakers (b) Screen reader (c) Mobile devices
- 37 Bluetooth is a networking technology that connects wireless mobile devices over a ..... range to form a network to transmit data.  
 (a) short (b) long (c) middle
- 38 Banks use the..... to share their information.  
 (a) opened networks (b) social media sites (c) closed networks





- 39 Braille method allows blind people to .....
- (a) hear (b) read (c) speak
- 40 The IOT consists of devices linked to the internet via .....
- (a) Bluetooth (b) Wi-Fi (c) satellite
- 41 The first step in solving a problem is .....
- (a) Identify the problem (b) Study solutions (c) Think of ways to solve
- 42 The problem solution of slowing download is .....
- (a) Check internet speed (b) delete unwanted App (c) update the App
- 43 When there isn't an internet connection, we should.....
- (a) check software update (b) check router connection (c) check internet speed
- 44 Mr. Hiebert uses.....to share his discoveries with colleagues.
- (a) email (b) video conference (c) both (a) and (b)
- 45 When the browser running slow, you can.....
- (a) check Wi-Fi signal (b) restart computer (c) shut down the computer
- 46 Mr. Hiebert uses.....to make presentations about his discoveries.
- (a) PowerPoint (b) Facebook (c) WhatsApp
- 47 You can organize files in computer by creating .....
- (a) main folders (b) Sub-folders (c) Both a & b
- 48 ..... helps us to access information by scanning it with a phone camera.
- (a) QR code (b) Printer (c) scanner
- 49 ..... folders help us to manage files using ICT tools.
- (a) Deleting (b) Creating (c) Copying
- 50 To create a new folder, select " ....." from the shortcut menu.
- (a) Paste (b) Copy (c) New
- 51 ..... is used to enter images and files from paper into the computer.
- (a) Keyboard (b) Printer (c) Scanner
- 52 To change the title of a folder, you can use the ..... command.
- (a) New (b) Open (c) Rename





- 53 To organize our files', we should ..... each folder.  
 (a) **name** (b) remove (c) print
- 54 The ..... are used to store data and information.  
 (a) microphone and mouse (b) **flash memory** (c) printer
- 55 ..... is used to take and store photos and videos digitally.  
 (a) **digital camera** (b) QR code (c) printer
- 56 ..... is a program to create graphs.  
 (a) Word (b) **Excel** (c) PowerPoint
- 57 The ..... Program is used to perform simple formulas.  
 (a) **Excel** (b) PowerPoint (c) Paint
- 58 You can share information online through .....  
 (a) internet (b) intranet (c) **both (a) and (b)**
- 59 Network used to share information and less secure is .....  
 (a) **internet** (b) intranet (c) both (a) and (b)
- 60 To create a simple formula in a cell, first type ..... that tells Excel you are creating a formula  
 (a) **=** (b) + (c) -

Question 02

put " true " or " false "

- 1 An Ethernet cable transmits audio and video to and from devices.
- 2 A bit is the smallest storage unit to store data.
- 3 The more cycles that CPU performs per second, the faster data can be processed.
- 4 Ethernet is more stable and faster than Wi-Fi.
- 5 External hard drive like an HDD but much faster
- 6 Kilobyte (KB) = 1024 byte.
- 7 HDMI is a wire that connects a computer or laptop with the router.
- 8 Megabits per second (Mbps) used to measure network speed.
- 9 Ethernet cable connects computers to the router.
- 10 Giga Byte = 1204 Kilobytes.





- 11 Byte is the smallest unit of data
- 12 To solve the problem of poor network connectivity during a video conference, you can use the wired ethernet network.
- 13 To connect a computer to the internet, you need a router .
- 14 There are no solutions for computer issues.
- 15 Flash memory is an external storage device
- 16 Hard disk space is smaller than flash memory
- 17 In late 80s phone lines are used to connect to internet but couldn't use the phone when on the internet.
- 18 The Internet is more secure and private than the intranet.
- 19 The Internet is a private network that is restricted to some people.
- 20 Hotspot allows you to access the internet anywhere from your smartphone.
- 21 To connect a computer to the internet, a gateway must be used.
- 22 The Egyptian Knowledge Bank is available for free to Egyptians.
- 23 The intranet is not different than the internet.
- 24 WWW is stands for World Wide Web.
- 25 The internet is a type of network that connects computers from all around the world.
- 26 A LAN is a wide area network.
- 27 The internet is used to share information.
- 28 A school's computer lab could have its own closed network
- 29 The company that provides internet to the society is called ISP
- 30 Digital washing machine is an example to the internet of things (IoT)
- 31 Always ask permission from your parents before buying anything online.
- 32 Bluetooth speaker is an example of the Internet of things.
- 33 Bluetooth is a network technology that works over long ranges.
- 34 Braille makes it more difficult to read for people of determination.
- 35 The screen reader is used by visually impaired to get audio feedback
- 36 Braille method allows blind people to read
- 37 We can control internet of things devices in the same room or in another city
- 38 PowerPoint is a Microsoft program used for making presentations.





- 39 Closing some programs is a possible solution in the case of home internet that does not work. ❌
- 40 Restarting the router is one of the ways to solve the slow download problem. ✅
- 41 Identifying the problem is the last step in solving computer problems ❌
- 42 It's important to check for software updates to avoid problems ✅
- 43 One of possible reasons for slow downloads is the internet speed. ✅
- 44 When the browser is running slow, you have to check Wi-Fi signal ✅
- 45 Adding sub folder inside the main is not allowed by operating system. ❌
- 46 You can add main folder inside sub folders to manage files. ❌
- 47 QR code is used to get information quickly and easily. ✅
- 48 Data must be organized in the computer for easy retrieval. ✅
- 49 We can give a name to a folder by right click then rename. ✅
- 50 The main folder contains subfolders and files. ✅
- 51 We use scanner to save image on computer to be used later. ✅
- 52 A scanner is used to enter pictures and files to the computer ✅
- 53 A keyboard can be used to insert images and save it for later use ❌
- 54 To change the title of a folder, choose the "Delete" command. ❌
- 55 To store and share information we use flash memory. ✅
- 56 We must place documents, images, and videos in the correct folder. ✅
- 57 The "+" symbol is the division sign ❌
- 58 The rows in MS Excel are labeled with letters ❌
- 59 You can add or subtract any data using Microsoft Excel ✅
- 60 We cannot sort information in an alphabetical order in Excel ❌

	Choose the correct answer	True or false
Lesson 2	١ - ١٣	١ - ١٦
Lesson 3	١٤ - ٢٧	١٧ - ٢٩
Lesson 4	٢٨ - ٤٠	٣٠ - ٣٧
Lesson 5	٤١ - ٤٦	٣٨ - ٤٤
Lesson 6	٤٧ - ٥٥	٤٥ - ٥٦
Lesson 8	٥٦ - ٦٠	٥٧ - ٦٠

انتهت الأسئلة مع أطيب الامنيات بالنجاح والتوفيق

